

# INTERNATIONAL STUDENT GUIDE

ACADEMY OF FINE  
ARTS IN GDAŃSK



# TABLE OF CONTENTS

## 1. ACADEMY OF FINE ARTS IN GDAŃSK

Why study here?

Faculties and courses

Facts and figures

Campus – buildings

International  
Relations Office

Buddy programme

Welcome meeting

The academic year calendar

Course registration and  
courses in English

Educational offer for foreign  
students

Student ID, library & Wi-Fi

Insurance & healthcare

Application

Tuition fees

## 2. THE CITY OF GDAŃSK

How to get to Gdańsk?

Part of Tri-city

Budget & shopping

Food & eating out

Accommodation

Legalisation of stay

General medical help

Public transport

Post office & banking

Internet & mobile  
network operators

## 3. POLAND

Cultural shock

Climate in Poland

Short history

Basic safety rules  
in Poland

Useful words  
and phrases

## 4. CONTACT DETAILS

Contact details





# 1. ACADEMY OF FINE ART IN GDAŃSK



# WHY STUDY HERE?



## Academy of Fine Arts in Gdańsk:

- ✱ is the most significant artistic Academy in the North of Poland, with 75 years of tradition
- ✱ is located in the central old town of historical Gdańsk in monumental buildings (the Great Armoury, the English House, the Small Armoury, the Thatch Bastille)
- ✱ about 200 academic staff, with a broad experience and achievements in the area of art and design
- ✱ currently at ASP in Gdańsk studies almost 800 students on both undergraduate and postgraduate levels
- ✱ in December 2015 there was an opening of the Armoury of Arts, which bases on the ground floor of the Great Armoury, and in a framework of which ASP in Gdańsk presents the cultural offer of exhibitions, workshops, lectures, debates, conferences and special events

with the participation of outstanding artists, designers and art theoreticians from Poland and all over the world. Armoury of Arts project is an expansion of cultural activities of ASP in Gdańsk.

- ✱ in January 2018 there was an opening of PATIO – the unique space designed for cultural events where words, ideas and creative activities infiltrate each other. It is an open and safe place for a broad group of people who want to commune with art every day. The scientific and academic staff, students and employees of the Academy of Fine Arts together with the participants of the cultural program implemented in the new Patio, want to revive ideas and lead projects through dialogue, visual techniques and widely understood creation.

For 75 years, the Academy of Fine Arts in Gdańsk has had great pleasure in educating new creators, who participate in the most important events in the area of culture, art and design, locally, nationally and abroad. We perceive culture as open, functioning in the public space, based on dialogue, co-created by artists and viewers. This is why, with attentiveness and engagement, we prepared a diverse cultural and educational offer aimed at art lovers of all ages. Experienced and entitled lecturers will open to you the richness of artistic techniques, means of communication and the newest methods of design. Spacious and well-equipped studios will allow you to make your bravest visions come true.

# FACULTIES AND COURSES

The Academy offers education within  
the framework of four faculties  
in the following fields of study:

## Faculty of Architecture and Design

1st and 2nd cycle programmes (3 + 2 years):

- \* Design
- \* Interior design
- \* Design of Cultural Landscapes

## Faculty of Graphic Arts

1st cycle studies (3 years):

- \* Graphics
- \* Graphics - specialisation Animation

2nd cycle studies (2 years):

- \* Graphics – specialisation Artistic Graphics
- \* Graphics – specialisation Graphic Design

## Faculty of Painting

Long-cycle Master's degree programme (5 years):

- \* Painting

## Faculty of Sculpture and Intermedia

Long-cycle Master degree programme (5 years):

- \* Sculpture

1st cycle studies (3 years):

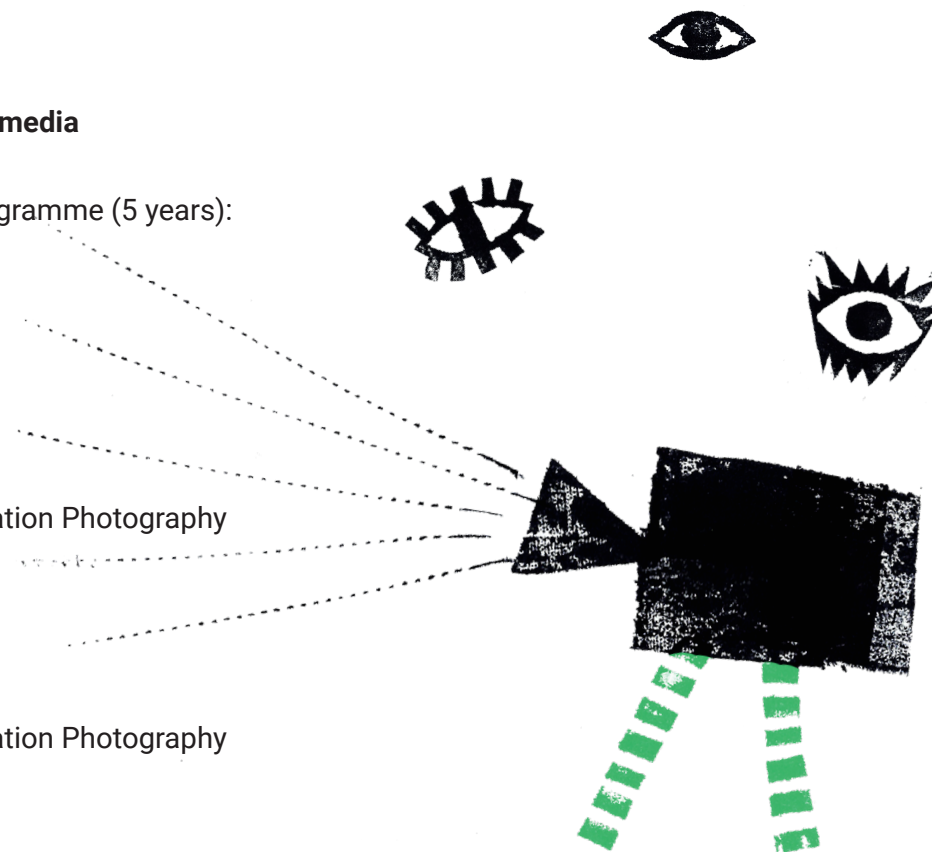
- \* Intermedia
- \* Intermedia – specialisation Photography

2nd cycle studies (2 years)

- \* Intermedia
- \* Intermedia – specialisation Photography

The list of courses is available here:

<https://akademus.asp.gda.pl/pl/katalog/>





# FACTS AND FIGURES

- ✱ The foundation year 1945
- ✱ 75 years of tradition
- ✱ 3 monumental buildings (the Great Armoury, the English House, the Small Armoury)
- ✱ public institution
- ✱ 4 Faculties  
(Faculty of Architecture and Design, Faculty of Graphics, Faculty of Painting, Faculty of Sculpture and Intermedia)
- ✱ Fields of study  
7 (Design, Design of Cultural Landscapes, Interior Design, Graphics, Intermedia, Painting, Sculpture)
- ✱ Academic staff **200**
- ✱ Total number of students **800**
- ✱ International agreements under the Erasmus + program **100**

Halina  
Malijewska  
Corridors Of The  
Faculty  
Of Painting





# CAMPUS – BUILDINGS

Academy is located in three  
different buildings:

## The Great Armoury [Wielka Zbrojownia]

Administration, the Faculty of  
Architecture and Design and  
the Faculty of Painting

Targ Węglowy 6  
(54°21'02.6»N  
18°38'56.6»E)

## The Small Armoury [Mała Zbrojownia]

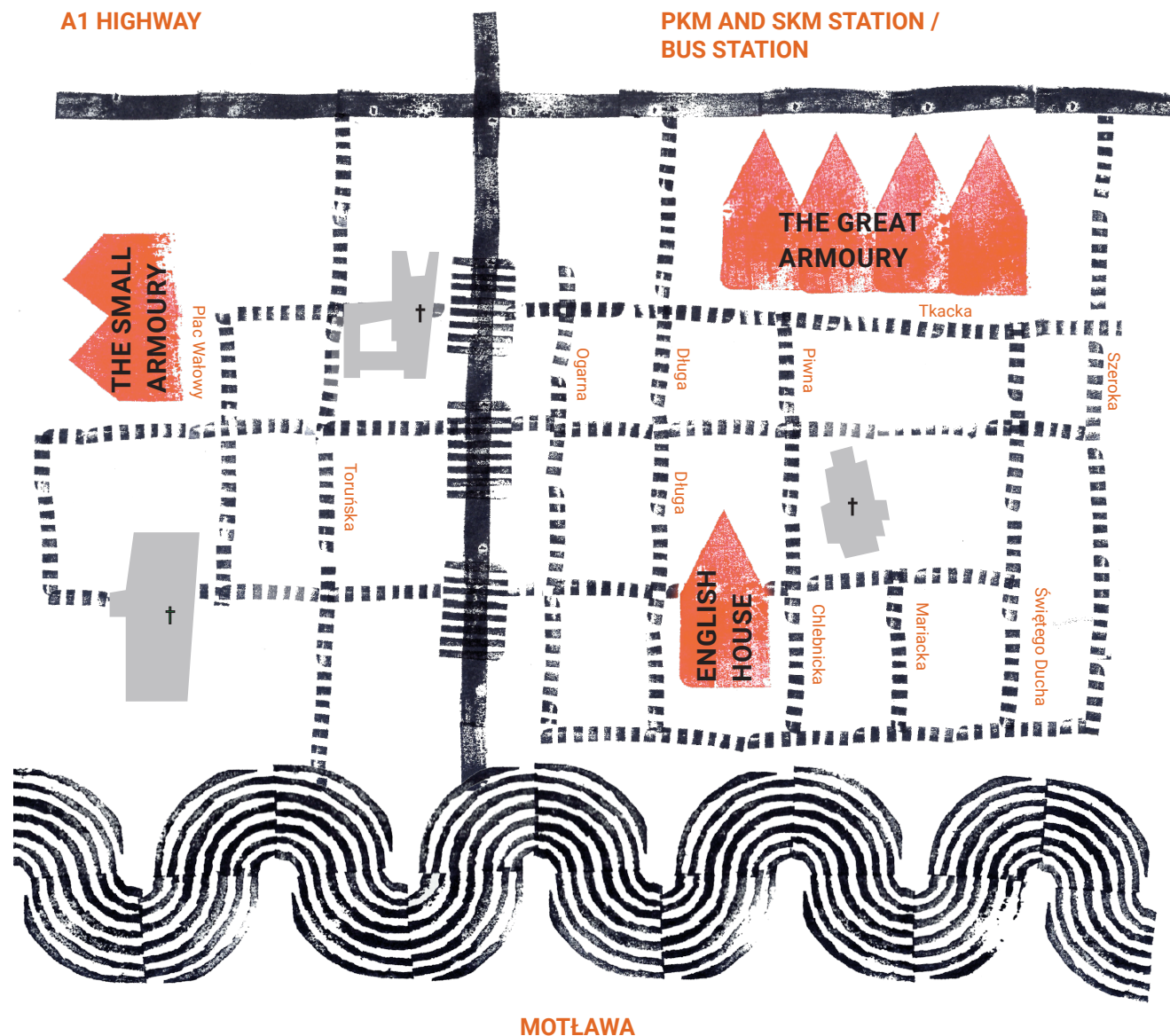
The Faculty of Sculpture  
and Intermedia

Plac Wałowy 15  
(54°20'31.0»N  
18°38'47.0»E)

## English House [Dom Angielski]


The Faculty of Graphic  
Arts and Student Dorm

Chlebnicka 13/16  
(54°20'55.3»N  
18°39'19.5»E)



# INTERNATIONAL RELATIONS OFFICE

The International Relations Office  
is located in the building of the Great  
Armoury, room no. 111, 1st floor

 Aleksandra Paciorkiewicz

Erasmus+ Coordinator  
e-mail: [erasmus@asp.gda.pl](mailto:erasmus@asp.gda.pl)  
Tel. 0048 58 301 21 40

 Hanna Świętnicka

International Relations Specialist  
e-mail: [erasmus@asp.gda.pl](mailto:erasmus@asp.gda.pl)  
Tel. 0048 58 301 21 40

 Paulina Tomczyk

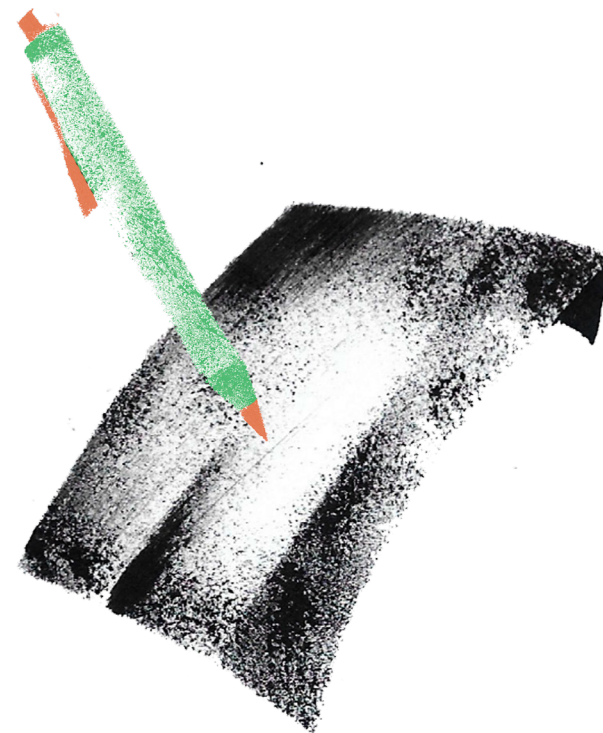
International Relations Specialist  
e-mail: [erasmus@asp.gda.pl](mailto:erasmus@asp.gda.pl)  
Tel. 0048 58 301 21 40

## Opening hours

Monday 10:00–14:00  
Tuesday 10:00–14:00  
Wednesday **closed**  
Thursday 10:00–14:00  
Friday 10:00–14:00

## Address

Academy of Fine Arts in Gdańsk  
Targ Węglowy 6  
80-836 Gdańsk Poland



# BUDDY PROGRAMME

Academy of Fine Arts in Gdańsk encourages its regular students to participate in the international student support programme. Thanks to their engagement, every international student gets contact to a so-called Buddy – one of Academy's students, who is going to help them with organizing their stay and make the most of their time at the Academy.







Welcome  
Meeting  
ASP Archives



Welcome  
Meeting  
ASP Archives



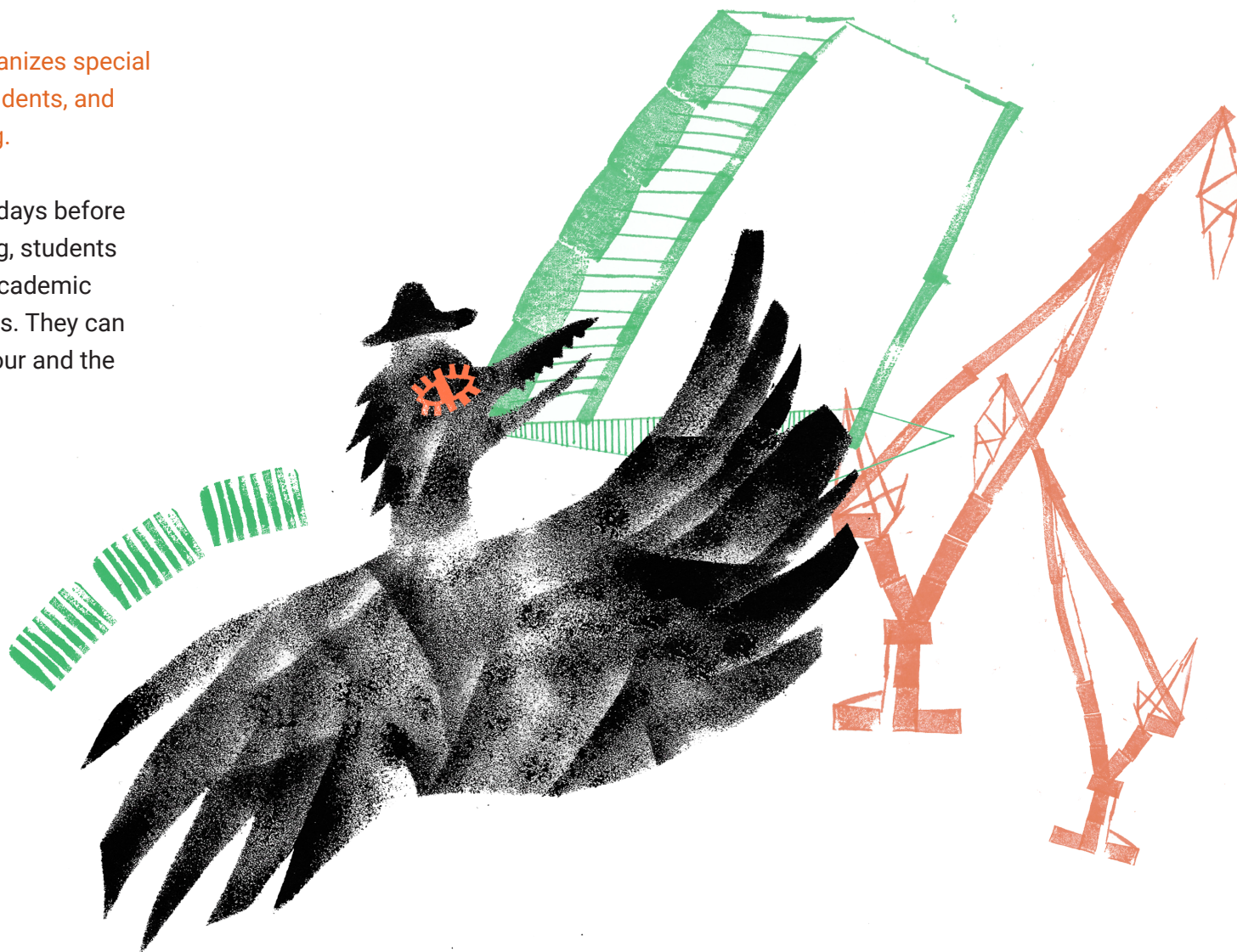


# WELCOME MEETING

Academy of Fine Arts in Gdańsk organizes special events dedicated to international students, and one of them is the Welcome meeting.

It takes place each semester, a few days before the classes start. During the meeting, students learn about the basics of our daily academic life and can ask all burning questions. They can also participate in the sightseeing tour and the integration event.

**Please, do not arrive late!**



# THE ACADEMIC YEAR CALENDAR

The academic year in Poland is divided into two semesters of 15 weeks each – the winter and the summer semester

**Winter semester: 01.10.2020–07.02.2021**

Exam session: 01.02.2021–07.02.2021

Holiday break: 24.12.2020–06.01.2021

Days off: 01.11.2020, 11.11.2020



**Summer semester: 08.02.2021–07.06.2021**

Exam session: 01.06.2021–07.06.2021

Holiday break: 02.04.2021–06.04.2021

Days off: 01.05.2021, 03.05.2021, 03.06.2021



# COURSE REGISTRATION AND COURSES IN ENGLISH



Workshops  
ASP Archives

For major courses, students register after they arrive at the Faculties. The team of the International Relations Office advises you all in that process.

It might be possible to participate in the courses from other faculties that the one they are assigned to, but each choice must be accepted by a professor that conducts the course. As there are limits of students in some studios, students need to be aware that not all of the courses may be available. Students have to make their final choices of the study programme within one month after arrival. Final registration to the courses has to be confirmed by the International Office.

Academy of Fine Arts in Gdańsk also prepares the additional offer of the courses in English, which are dedicated to the international students. That supplementary educational offer changes each semester.

# EDUCATIONAL OFFER FOR FOREIGN STUDENTS

All of the theory courses offered at the Academy of Fine Arts in Gdańsk are conducted in Polish. For that reason, some theory courses are exclusively organized for international students and are taught in English. There is also an educational offer of practical courses in English, organized in response to the needs and interests of most of the incoming students. We always highly recommend choosing as many of the subjects dedicated to international students as possible.

## Polish language course

During the semester you will participate in a Polish language course – it is obligatory, takes place once a week, and will be rewarded with 2 ECTS point

## Examination and grading scheme

There are two assessment methods at the Academy of Fine Arts in Gdańsk

the student will be assessed on the scale A–F (A=excellent, F=fail)

the student will be assessed «Passed» or «Failed», without a mark

ECTS Grade	Lokal grade
A	5,5 or 5
B	4,5
C	4,0
D	3,5
E	3,0
F	2,0

Description of the institutional  
grading system



# STUDENT ID LIBRARY & WI-FI

During your stay, you have a right to use our Library and a Wi-Fi free of charge. If you already have an Eduroam account, it should be connected with our network automatically.

## **Student ID**

It gives you discounts for public transport (up to 51%), cinemas, theatres, clubs, pubs etc. The cost is 22,00 PLN and needs to be paid on our first meeting. It is not obligatory to have it issued.

## **Akademus System**

Akademus is the Academy's system that provides access to all necessary information related to the student's course of study, among others, grades, deadlines, application procedure and forms. Incoming students register in the system during the application procedure and continue using their functionalities while staying at the Academy.

*Library*  
ASP Archives



# INSURANCE & HEALTHCARE

Before your arrival, you are obliged to get two types of insurance policies: Health Insurance and Accident Insurance. The insurance policies have to be valid in the EU member state and cover the entire time of your stay at the Academy.

## EU citizens

People who reside on the territory of Poland temporarily, are entitled to use free medical services under the European Health Insurance Card (EHIC) in the units with a sign of National Health Fund (NFZ- Narodowy Fundusz Zdrowia).

## Non-EU citizens

Before coming to Poland, every student should arrange health insurance (f. e. ISIC or EYCa). According to domestic regulations concerning medical care, citizens outside of the EU are obliged to bear costs related to medical services. Their insurances later cover such charges. Unfortunately, you cannot expect the health service employees to speak English; you should rather take with you someone who could translate for you.

## Please note

If you suffer from any chronic problems, need a continuous medical treatment or are under permanent medical supervision, remember to:

- 👁️ take the documentation of your health history
- 👁️ check the medication equivalents available in Poland (sometimes your medication might be available under a different name)
- 👁️ ask your insurance provider, which health care and services points do they cooperate with

Contraceptive pills are on prescription in Poland

In case of lack of the EHIC or equivalent document a patient will have to cover the costs of a service by her/himself



# APPLICATION

## The additional standard requirements for foreigners include:

- ✳ confirmation of sufficient knowledge of the Polish language to enter the chosen field of study,
- ✳ a high school diploma and – if applying to 2<sup>nd</sup> or 3<sup>rd</sup> cycle studies – a diploma from the previous cycle of study (for example a BA diploma is necessary to apply for an MA course).

You will also be asked to prove that you have the predispositions and qualifications required by the Academy of Fine Arts in Gdańsk.

To receive detailed information on the Academy's recruitment process, please contact our

**Admissions Office:** [biuro.rekrutacji@asp.gda.pl](mailto:biuro.rekrutacji@asp.gda.pl)



# TUITION FEES



If you study on a tuition fee-paying basis,  
the tuition fee is 5500 EUR per academic year.



## Recognition of foreign school certificates and diplomas in Poland.

Foreign certificates of education may be recognized in Poland on the basis of international agreements or, in the absence of such agreements, according to the regulations on nostrification. International agreements, to which the Republic of Poland is a party, regulating the legalization of foreign diplomas can be found on the website of the Ministry of Science and Higher Education (see [www.mnispw.gov.pl](http://www.mnispw.gov.pl))






## Principles of studying in Poland for foreigners

You can study in Poland as a foreigner on the basis of rules defined within/by:



-  international agreements,
-  agreements concluded between a higher education institution and foreign entities,

-  decision of the minister competent for higher education,
-  decision of the Rector of a higher education institution.

## Studying on terms applicable to foreigners, you can:

-  be awarded a scholarship by a Polish institution,
-  study on a tuition fee basis,
-  study free of tuition fees and with no scholarship entitlement,
-  be awarded a scholarship by the sending partner (for example your country or university), and free of tuition fees,
-  be awarded a scholarship by Polish higher education institutions.

International Students can also study at full-time programmes on the same terms as Polish citizens, once certain conditions have been fulfilled, for example:

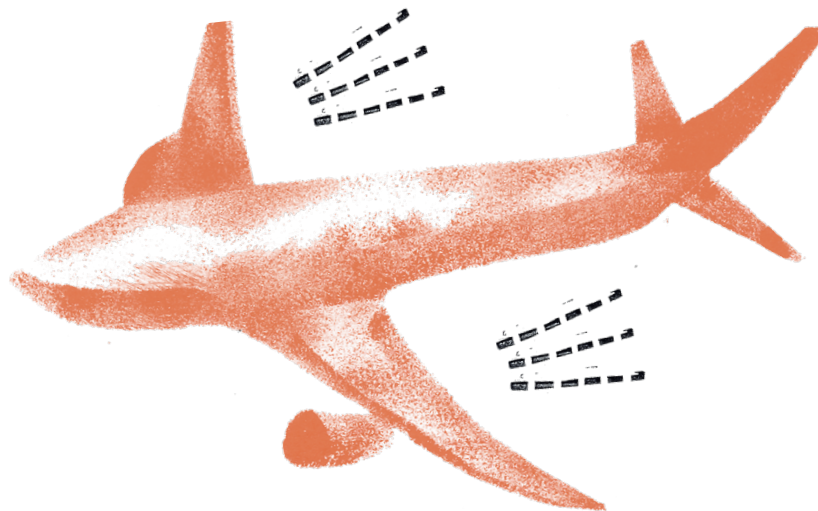
-  they are holders of a valid Polish Card (Karta Polaka) or holders of a decision on validation of his/her Polish origins;
-  they are holders of a permanent residence permit or holders of a European Community long-term residence permit issued in Poland



## 2. THE CITY OF GDAŃSK



# HOW TO GET TO GDAŃSK?



Getting to Gdansk should not cause any problem, as you can reach our city by all means of transport.

## By plane

Gdańsk has an international airport – Gdansk Lech Walesa Airport, which is located about 10 km from the centre of the city.

Please check the website of the airport to verify the list of plane connections, as many new flights to and from various destinations are constantly being added there: [www.airport.gdansk.pl](http://www.airport.gdansk.pl)

## By train

Gdańsk is connected to all major cities in Poland, and the main train station is located just next to the Old Town.

Major train operators in Poland are PKP Intercity and InterRegio:  
[www.intercity.pl](http://www.intercity.pl)  
[www.polregio.pl](http://www.polregio.pl)

As PKP is a leading train provider in Poland, to buy a ticket online (you can use a ticket on a smartphone without a printout), find out schedules, connections and prices, please visit <https://www.intercity.pl/en/>

Tips: EIP is the fastest and most modern but also most expensive train.

IC takes the relatively same time to arrive at the place but goes at less comfortable times and has a lower standard than EIP. It is cheaper than EIP.

TLK goes much longer to the place of destination and is of the lowest standard but is also significantly cheaper. Mind that if you buy the EIP ticket 30 days in advance, you can get it as affordable as 50 PLN (to Warsaw). The fewer tickets for a particular train are available, the more expensive they are.



# HOW TO GET TO GDAŃSK?

## By car and coach

The main routes leading to Gdańsk are:

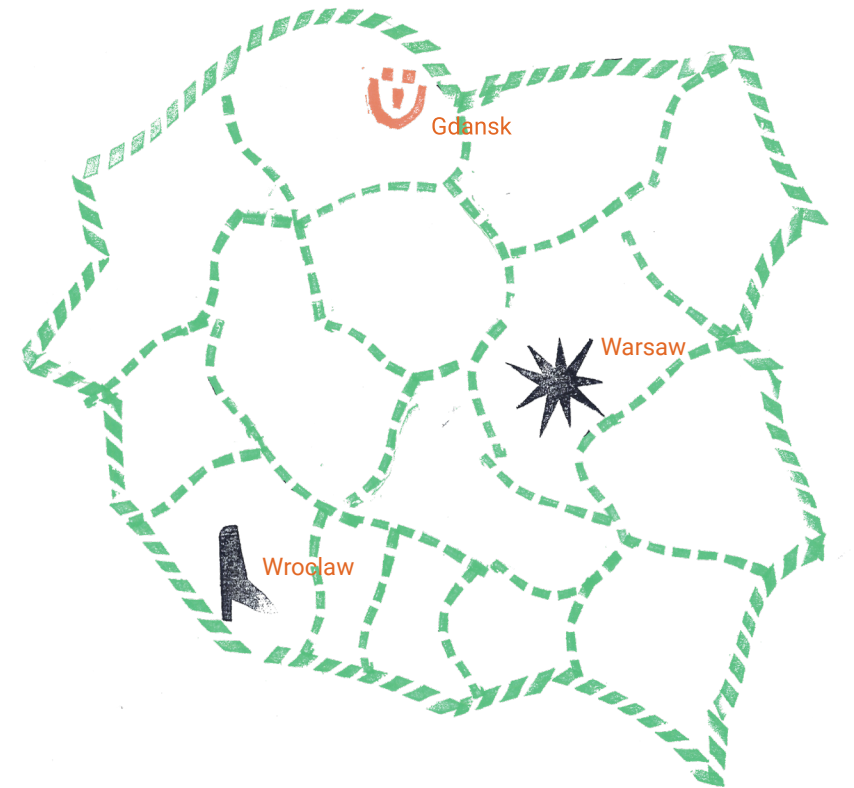
- ✱ the E28 from the west via Gdynia
- ✱ the E75 from the south via Gdańsk
- ✱ the E77 from Warsaw which comes into the city via Gdańsk from the east
- ✱ the A1 highway from the south

You can also travel to Gdańsk by bus using one of the many coach operators, such as Flix Bus, Eurolines, Sindbad, Eurobus, Ecolines etc. The Flix Bus company offers inter-city connections between Gdańsk and other Polish cities.

## By ferry

There are a few connections with Scandinavian countries:

- ✱ with Sweden (Nynäshamn)  
[www.polferryes.pl](http://www.polferryes.pl)
- ✱ with Sweden (Karlskrona)  
[www.stenaline.pl](http://www.stenaline.pl)
- ✱ with Finnland (Helsinki)  
[www.finnlines.com](http://www.finnlines.com)





# PART OF TRI-CITY

More than a thousand years of history and a breathtaking seaside location makes Gdańsk one of the most beautiful cities in Poland. The first information about Gdańsk comes from 997. It is considered as the city of freedom, as Gdańsk workers created Solidarity, the independent Polish trade union, and that is how the idea of Polish Solidarity was born.

Gdańsk is a part of Tri-city – a metropolitan area in northern Poland (in Pomeranian Voivodeship), consisting of three cities: Gdańsk, Gdynia and Sopot, as well as the other minor towns in their vicinity. The Tricity metropolitan area has a population of over 1 million people – almost half of them live in Gdańsk.

If you look for symbols of Gdańsk that shouldn't be missed – Neptune Fountain, the majestic Żuraw crane and the Shipyard cranes are some of them. But as a Tricity is not a homogeneous urban entity, it is worth to spend some time in each of its parts and districts to discover its many faces.

**Here is the list of worth recommending places to visit during your stay in Tri-city:**

- ✂ European Solidarity Centre
- ✂ Museum of the Second World War
- ✂ St. Mary's Street
- ✂ Westerplatte
- ✂ Murals in Gdansk Zaspą
- ✂ The National Museum
- ✂ Amber Museum
- ✂ The Gdansk Shakespeare Theatre
- ✂ Oliwa Park
- ✂ Bohaterów Monte Cassino Street  
in Sopot with Pier (Molo)
- ✂ Castle Mountain in Sopot
- ✂ Kościuszko Square  
with the Seaside Boulevard in Gdynia
- ✂ Emigration Museum in Gdynia

# BUDGET & SHOPPING

The currency of Poland is the złoty (code: PLN, local abbreviation: zł), divided into 100 groszy (abbreviation: gr). Poland has not adopted the Euro, so you will need zlotys for cash payments. On the day 20th of September 2020 1 PLN (Polish Złoty) values 0,22 Euro or 0,27 American dollar or 0,21 Pound sterling.

There are many small local shops around the city where you can buy groceries and household goods. Most of them are opened from 6:00 a.m. to 6:00 p.m. on weekdays (it is better to check with a particular shop). You may expect shortened opening hours at weekends. Additionally, large stores close on Sundays (except a few specific weekends of the year).

Be wary of and make enough food supply before public holidays, when all supermarkets and malls close. Gas stations (e.g. Orlen, BP, Lukoil, Circle K) are open non-stop, and they usually allow limited shopping.

As an international student you are, of course, exempt from paying any registering or tuition fees for education at the Academy. Please note that the Academy does not cover the costs of materials and devices that you will need to accomplish your artistic projects. Remember to plan your budget!



# BUDGET & SHOPPING

## The biggest shopping malls

- \* Forum (almost vis-à-vis the Great Armoury)
- \* Madison
- \* Galeria Bałtycka
- \* Galeria Przymorze
- \* Galeria Manhattan
- \* Centrum Matarnia (with big IKEA store)
- \* Alfa Centrum

## The shops for toiletries

- \* Rossmann
- \* Natura
- \* Hebe.

## The cheapest and most common grocery supermarket

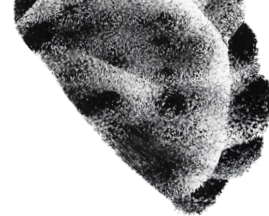
- \* has a sign of Biedronka (ladybird)
- \* Lidl
- \* Netto

There is a very nice market with local food situated at Plac Dominikański 1





# FOOD & EATING OUT



## Food

dinner in a touristic canteen \* **10–20 PLN**

dinner in a restaurant \* **25–40 PLN**

home-made meals \* **20–30 PLN** *per day*

milk \* **2–3 PLN**

bread \* **3–4 PLN**

butter \* **7–10 PLN**

pizza \* **15–30 PLN**

beer \* **5 PLN** *in a shop* / **7–15 PLN** *in a pub*

## Travelling fares

local train service

SKM Gdańsk–Sopot \* **4.40 PLN**

train ticket

(Gdańsk–Warszawa) \* **50–150 PLN**

bus or tram ticket \* **1.90 PLN** *with ASP Student ID card*

24h bus&tram travel card \* **7 PLN** *with ASP Student ID card*

cinema \* **16–30 PLN**

theatre \* **16–30 PLN**

## Toiletries

toothpaste \* **5–10 PLN**

shampoo \* **8–15 PLN**

soap \* **3–8 PLN**

washing powder \* **10–30 PLN**

shower gel \* **5–10 PLN**

painkiller (pack of pills) \* **10–20 PLN**

## The most common Polish dishes are:

**Pierogi** (dumplings - round pieces of thin dough stuffed with various types of food, for example, meat, cheese or fruit, and folded in half),

**Żurek** (sour cream soup),

**Bigos** (traditional Polish dish of sauerkraut, meat and dried mushrooms).

## Cheapest, self-service local food bars

are so-called Milk bars, where the price for the two-course meal is up to 20 PLN. They close quite early (around 6:00 p.m.) but are also open for breakfasts.

The two Milk bars nearest to the Academy are:  
Bar turystyczny – Szeroka street 8/10,  
Bar mleczny – Stągiewna street 15/1  
You can also eat relatively cheap and near Academy in Pyra bar (all potatoes dishes) – Garbary 6/7 or Naleśnikowo (all pancake dishes) Ogarna 125.

There are also many delicious vegan restaurants in Gdańsk, ex. Falla, House of Seitan or Avocado. Cheap pasta place nearby is called Pasta house – Lawendowa 9. For a typical Pizza find Da Grasso or Telepizza. To order any dish from any restaurant – takeaway online – you can use portals like:

[pyszne.pl](https://pyszne.pl)

[pizzaportal.pl](https://pizzaportal.pl) etc.



# ACCOMMODATION

Unfortunately, Academy's student dorm is quite small (there are only 30 places for approx. 800 students) and it is challenging to get a room there. You will be, of course, informed if such a place is available.

Each year international students rent rooms in shared flats, studios or apartments from private landlords. During the process of a flat hunt, you can always ask your Buddy for help (see Buddy programme above). It is also advised to look for a flat together with your fellow international or Polish students.

You can meet them and get together on Facebook groups Incoming Students Academy of Fine Arts in Gdansk or Pudelek ASP. We also invite you to visit our Facebook profile Erasmus ASP Gdansk.

There are also some private dorms in Gdansk (ex. Student Depot, Akademik Collegia etc.). If you are interested in their offer, please ask for some discounts for ASP students.

## **The approximate monthly costs of rent are:**

- ✿ single room in a private flat 700–1000 PLN
- ✿ double room in a private flat 1000–1500 PLN
- ✿ 2–3 bedroom flats 2200–3000 PLN
- ✿ studio 1300–2000 PLN

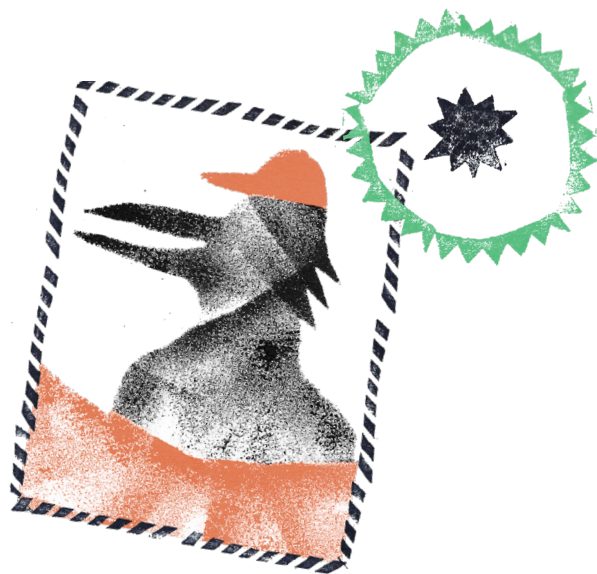
Additionally, usually, you will have to pay a refundable deposit in advance or all together with your first rent. Its cost differs between a half and a full monthly price. It will be given back to you after you move out, and it is to secure the landlord in case of any damages.



# LEGALISATION OF STAY

Citizens of the European Union who enter Poland without a visa may stay on the Polish territory without the need to legalise their residence for three months. If their stay continues for more than three months, they are obliged to register their residence

Citizens of non-EU countries – before arriving to Poland a student should obtain a Polish visa at the Polish Embassy in their country. To extend your stay in Poland, apply for the issue of a temporary residence card within 90 days after your arrival.



## Registering the residence of EU citizens

Initiating the administrative proceedings:  
an application for registering the residence  
with enclosures.

### Enclosures

- 👁️ Copy of the first page of ID or passport
- 👁️ Copy of credit card or bank statement
- 👁️ Copy of health insurance
- 👁️ Certificate of enrolment from the Academy

## Registering the residence of non-EU citizens

**Initiating the administrative proceedings:**  
an application for registering the residence  
with enclosures.

### Enclosures

- 👁️ 4 photos (35x45mm)
- 👁️ Copy of passport (all pages)
- 👁️ Certificate of enrolment from the Academy
- 👁️ Copy of health insurance
- 👁️ Copy of credit card or bank statement or other confirmation of having funds for the residence in Poland
- 👁️ Confirmation of having funds for the return trip

Location: Department for Foreigner Issues  
(room 93) Pomeranian Voivodship  
Office in Gdańsk. Okopowa street no.  
21/27 80-810 Gdańsk

For more details, visit the website:

[www.gdansk.uw.gov.pl/en](http://www.gdansk.uw.gov.pl/en)



# GENERAL MEDICAL HELP

With EHIC card you can visit all health centres that have the NFZ sign on the outside of the building (have the contract with NFZ). In the area of the City Centre there are many to be found, for example:

## Health care centres, where you can make an appointment with a first-contact doctor

- \* Wałowa Street 27
- \* Żabi Kruk 10
- \* Jaskółcza 7
- \* Aksamitna 1

## Hospitals and emergency points

- \* Copernicus
- \* Nowe Ogrody 1–6
- \* Emergency department contact no.:  
58 764 01 16

You can also use private health centres and cover costs by yourself. The advantage is that at the private sector you rarely meet long queues to make an appointment and for a visit itself, as they mostly happen in the public sector.

The prices for a necessary consultation differ between 100–200 PLN; you pay additionally for each professional examination or laboratory check-up.

## Most common private health care centres:

- \* Luxmed – Wileńska 44, Aleja Zwycięstwa 49
- \* Medicover – Aleja Grunwaldzka 472A

The main emergency number for all the services is 112. Unfortunately, you cannot always expect the emergency employees to speak English; it is better to have someone who could translate

## Emergency numbers

- 112 general
- 999 ambulance service
- 998 fire brigade
- 997 police



for you nearby. In case of an assault of any kind, please report it to the police.

The police emergency number is 997. If you want to report an offence personally, you should go to the nearest Police station – the Municipal Police Headquarters in Gdańsk, Nowe Ogrody 27.

Ambulance service and the medical emergency number is 999.

To contact firefighters call at 998.

The emergency numbers are free of charge, and you can dial them without entering a PIN code.

# PUBLIC TRANSPORT

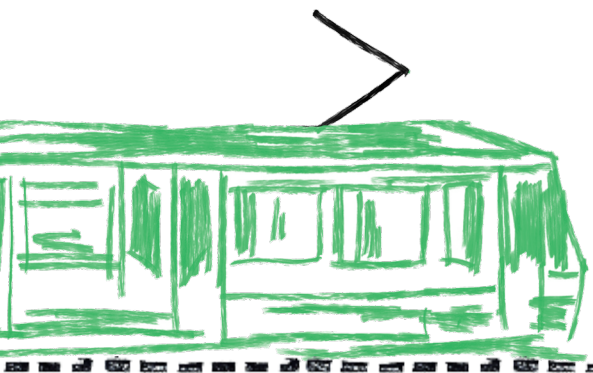
It is convenient to download  
an app on your smartphone:

[trojmiasto.jakdojade.pl](http://trojmiasto.jakdojade.pl)

It shows you what is the best connection to your  
place of destination when using public transport.  
Its interface is available in English, and it works  
for all bigger cities in Poland.

Please remember that to use student tickets, you  
must be able to show a valid Student's ID when  
ticket controllers appear. Student tickets are  
known as bilet ulgowy «bee-let ool-gaw-vy».

There are two leading public transport operators  
in Gdańsk: SKM and ZTM



## SKM

By SKM you can get to certain districts  
of Gdańsk, but also other parts of Tricity  
(Sopot, Gdynia).

Check schedule and tickets prices  
on <https://bilety.skm.pkp.pl/en/>

Prices of tickets depend on the distance –  
when buying a ticket you have to choose  
a starting station and the station where you  
want to arrive to.

Taxi-like apps:

[pl.mytaxi.com](http://pl.mytaxi.com)

[www.uber.com/pl/ride/](http://www.uber.com/pl/ride/)



## ZTM – bus, tram

Check schedule on: [www.ztm.gda.pl](http://www.ztm.gda.pl)

Single journey tickets entitle the bearer to a single  
journey on one bus or one tram only. These  
tickets are valid from the time of validation  
until leaving the vehicle. The tickets should be  
validated immediately after boarding the vehicle.  
Time tickets – depending on their nominal  
value – entitle you to many journeys during 1 hour  
or 24 hours with as many changes as required.  
During the first journey, the ticket should be  
validated immediately after boarding the vehicle.  
From this time on, the ticket is valid for the time  
indicated by its nominal value.

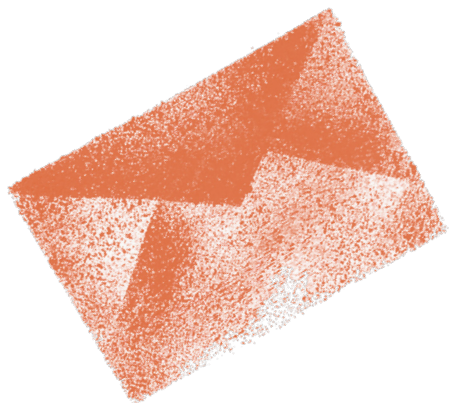
Attention! Ticket prices for fast services  
(marked with the letter «A») and night services  
(marked with the letter «N» and a number,  
e.g. N0, N1) are higher than those  
on regular services.

If you would like to issue a season ticket,  
you can charge our electronic student ID card.  
More information is available here:

<https://ztm.gda.pl/bilety/legitymacja-studencka,a,3103>

# POST OFFICE & BANKING

Poczta Polska buildings are located throughout the cities, often with branches at the main railway stations. They are places where you can buy a stamp, send a parcel or pay some bills. Post offices are usually open five days a week from 8 a.m. to 6 p.m. There is a 24 hours/day post office at the Długa street in the Old Town.



You can open an account in Poland (usually only the passport is needed) or get money directly from the bank account in your home country.

## **There are a few options to get zlotys for cash payments in Poland**

- 👁️ you can withdraw money from the ATM's (many of them are located in the Old Town of Gdańsk and in the shopping malls). They feature English and certain other languages
- 👁️ you can exchange money in a bank (many of them located in the centre of the city)
- 👁️ use a currency exchange office called kantor. It may sometimes be the best option and offer a better rate when you exchange a large amount of money

Although paying with bank cards, or credit cards, is very popular in the city, not all shops accept them, and there may be a limit such as 5 or 20 zł, below which you are to pay in cash. Paypass is a very common way of payment in Poland. While paying in cash, do not be surprised when the shop assistant asks you for the exact amount or refuses a larger note (such as 100 zł), due to lack of change.



# INTERNET & MOBILE NETWORK OPERATORS

There are many Internet Access Providers in Gdańsk. Every company has got its own area that it serves. If you want to find a provider that serves your area, the easiest way is to check this website: [www.panwybierak.pl](http://www.panwybierak.pl), filling in the name of the city and the street you are living in.

## **The biggest mobile network operators in Poland**

- \* Orange
- \* Plus
- \* T-Mobile
- \* Play

You can buy a sim-card for each of them at some grocery shops, kiosks or official shops. Remember to check if your phone does not have a sim-lock as it is necessary to have it removed. A starting pack price varies, but it starts from 5 PLN. The top-ups are available in different amounts (usually 20, 50, 100 or 150 PLN but in some cases can be any amount).

Before your number is ready to use, you will have to register it on your data according to the requirements of Polish law. It is also possible to get a contract based on monthly billing. A contract is usually termed for 12 or 18 months, and you will have to show your passport and proof of permission to stay in Poland to be able to sign it. Before making a choice, it's good to check also smaller operators like Nju Mobile or Virgin as they might have better deals than the leading operators.



# 3. POLAND



# CULTURAL SHOCK!

Although Poland is formally secular, about 90% of the population are declared Catholics, that's why it is said to be a catholic country. For that reason, most of the Catholic holidays are days off and don't be surprised to see religious signs in public spaces.

The signs on toilet doors are a bit confusing: a circle stands for women and a triangle for men.

It is obligatory to keep quiet in your flat (no high volume music and noises) between 22.00–7.00.

Tipping in restaurants is expected but not obligatory. Sometimes you have to pay for using a toilet in restaurants and bars.

In Poland, we celebrate name days! Each day of the year has its Saint Patrons, and people who carry their names can celebrate that day as if it was their birthday. Some people celebrate it instead of a birthday. Some just receive best wishes.

If invited to somebody's house for a meal, it is polite to bring a gift – flowers (always an odd number of them!), sweets or alcohol are the most common choices.

Poles are well-known because of their hospitality. There is even an old Polish proverb saying 'Gość w dom, Bóg w dom', which means that the presence of a guest is God's blessing. It is particularly important in Polish tradition not to leave anybody alone or hungry for Christmas Eve – this is why there is always an extra plate on Polish Christmas tables. Rarely does any additional guest visit you on that day but if you are in Poland, you might expect that your friends will invite you to spend that evening with them.

Time of eating meals differs considerably from that in most other European countries. In most of the Polish homes, breakfast is eaten early in the morning, then at about 3 or 4 p.m. there is usually a two-course dinner (soup and a main course); finally, supper is consumed at about 7–8 p.m.

It sometimes happens that a man greets a woman with a kiss on her hand. It happens less and less common and is considered rather an old tradition, but you might better know about it in advance.

Even though a handshake is a typical greeting in Poland, some men might not shake a woman's hand. Women (and sometimes men) who are close friends will kiss each other on both cheeks.

Lectures at the Academy may sometimes start 15 minutes later (so-called 'academic quarter' acceptable rather among university teachers and not students).





# CLIMATE IN POLAND

In Poland, the climate is said to be continental, with cold winters (often below freezing) and warm summers. However, especially in recent years, you can experience a variety of weather conditions in each of the seasons, that is why it is necessary to equip yourself with a variety of clothes for both semesters of studies. In winter it is essential to have a very warm jacket and shoes as well as some sweaters and jumpers, warm socks, hats, scarves and gloves. The average temperature is around  $0^{\circ}\text{C}$  but the minimum in some years it happens to fall even to  $-20^{\circ}\text{C}$ . In summer it is usually warm ( $15\text{--}25^{\circ}\text{C}$ ), sometimes hot (over  $30^{\circ}\text{C}$ ), but even then you might need a jacket or a jumper at night. The average temperature for spring and autumn is  $5\text{--}15^{\circ}\text{C}$ . Springs and autumns are rather rainy, but also summers and winters happen to be stormy.

*Stogi Beach*  
Agnieszka  
Szumińska

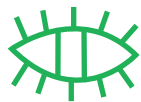


# SHORT HISTORY



**966**

Christianisation  
(symbolically  
regarded as the  
creation of the state  
of Poland)



**1569**

Polish-Lithuanian  
Commonwealth  
(start of the Polish  
Golden Age)



**1918**

Reconstitution  
of Poland



**1945**

Communist  
Poland

**1025**

Kingdom  
of Poland



**1795**

Partition of Poland  
(appropriated by the  
Russian Empire, the  
Kingdom of Prussia  
and the Habsburg  
Austrian Empire)



**1939**

Invasion of Poland,  
World War II



**1989**

Republic  
of Poland



History of Poland in a nutshell

# BASIC SAFETY RULES IN POLAND

- ✳️ Avoid isolated areas, especially when walking in the evening or at night. Let your roommates or friends know where you are going and what time you expect to be back
- ✳️ Pay particular attention to what is happening around you in crowded places (concerts, streets, clubs), don't leave your possessions unattended, especially documents and money; when you leave your dorm room, lock it
- ✳️ Don't drive vehicles (a car, a bike) under the influence of alcohol (in Poland the maximum permitted amount of alcohol in the blood is lower than 0.2 per mil)
- ✳️ Never leave valuables (ex. money, mobile phone etc.) in easily accessible and visible places
- ✳️ Avoid carrying a large amount of cash on you, especially when you go to a party. Buy your tram/ bus ticket home in advance or do not forget your ZTM card/ Student ID card (valid monthly ticket). Check the route home using

ZTM maps:

<https://ztm.gda.pl/planowanie-podrozy/schematy-komunikacyjnej,a,25>  
or jakdojade.pl service  
<https://jakdojade.pl/trojmiasto/trasa/>

- ✳️ Cross the street only at the zebra crossing and when the traffic lights are green
- ✳️ Don't drink alcohol in public places
- ✳️ Don't smoke in public places, except in designated zones
- ✳️ Don't drive vehicles (a car, a bike) under the influence of alcohol (in Poland it is admissible to drive motor vehicles if the concentration of alcohol in the blood is lower than 0.2 per mil)

- ✳️ Never keep your drinks out of sight at parties or in clubs- somebody could add something to them
- ✳️ You will be fined for ticket evasion
- ✳️ Don't cycle outside the bike lanes; in case there is no bike path – please ride on the right side of the street. Get off the bike and walk across the zebra crossing unless there is a horizontal sign on the road allowing cycling through the street
- ✳️ Remember! Drugs (even so-called 'soft') are illegal in Poland. You can be charged with a criminal offence for drug possession
- ✳️ Use legal software on your computer



# USEFUL WORDS AND PHRASES



**Please**

*Proszę*

**Hello**

*Cześć*

**Good morning**

*Dzień dobry*

**Goodbye**

*do widzenia*

**Thank you**

*Dziękuję*

**Excuse me**

*Przepraszam*

**Yes**

*tak*

**No**

*nie*

**I don't know**

*Nie wiem*

**I don't understand**

*Nie rozumiem*

**Do you speak...**

*Czy mówisz...*

**...English?**

*...po angielsku?*

**...German?**

*...po niemiecku?*

**...Spanish?**

*...po hiszpańsku?*

**I don't speak Polish**

*Nie mówię po polsku*

**What is your name?**

*Jak masz na imię?*

**My name is Emily.**

*Mam na imię Emily.*

**How are you?**

*Jak się masz?*

**I am lost.**

*Zgubiłem się.*

**Where is the bathroom?**

*Gdzie jest toaleta?*

**Food**

*jedzenie*

**Water**

*Woda*

**Attention!**

*Uwaga!*

**Ticket**

*Bilet*

**One ticket to...please**

*Jeden bilet do...*

**You're welcome**

*Nie ma za co*

**Train**

*Pociąg*

**Bus**

*autobus*

**Airport**

*lotnisko*

**Train station**

*dworzec*

**Bus station**

*dworzec autobusowy*

**1**

*jeden*

**2**

*dwa*

**3**

*trzy*

**4**

*cztery*

**5**

*pięć*

**6**

*sześć*

**7**

*siedem*

**8**

*osiem*

**9**

*dziewięć*

**10**

*dziesięć*



# 4. CONTACT DETAILS



# CONTACT DETAILS

Gdańsk – the city of Freedom

## **Editors**

International Relations Office

## **Graphic Design**

Marta Shurpakova

## **Artistic Supervisor**

Agnieszka Szumińska

## **Photographs**

ASP Archives

Academy of Fine Arts in Gdańsk

Targ Węglowy 6

80-836 Gdańsk

e-mail:

[international@asp.gda.pl](mailto:international@asp.gda.pl)

[erasmus@asp.gda.pl](mailto:erasmus@asp.gda.pl)

[www.asp.gda.pl](http://www.asp.gda.pl)

The program is co-financed from the European Social Fund under the Operational Program Knowledge Education Development, a non-competition project entitled «Increasing competencies of the academic staff and the institutions' potential to receive people from abroad – Welcome to Poland» implemented as part of the Activity specified in the application for co-financing of the project no. POWR.03.03.00-00-PN 14/18



ACADEMY  
OF FINE ARTS  
IN GDAŃSK



European  
Funds  
Knowledge Education Development



Republic  
of Poland



European Union  
European Social Fund

